

**Minuteman<sup>®</sup>**



## Parts Manual

## V14 Pro Plus & V17 Pro Plus

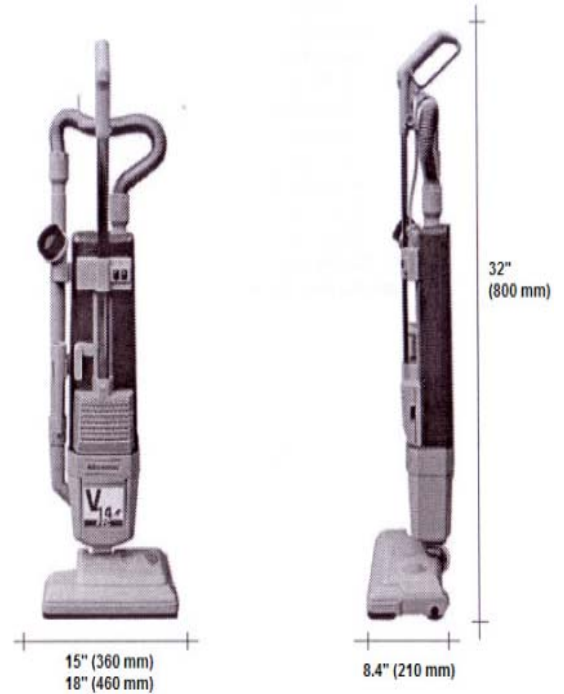
[www.minutemanvac.com](http://www.minutemanvac.com), a division of Enviro Safety Products | 1.800.637.6606

## Table of Contents

<b>Technical Specifications</b> .....	<b>2</b>
<b>Safety Instructions</b> .....	<b>2</b>
<b>Chassis Assembly Upper</b> .....	<b>3</b>
Chassis Assembly Upper Bill Of Material .....	4
<b>Chassis Assembly Lower</b> .....	<b>5</b>
Chassis Assembly Lower Bill Of Material .....	6
Wiring Diagrams.....	7
<b>Minuteman Limited Warranty</b> .....	<b>8</b>

## Technical Specifications

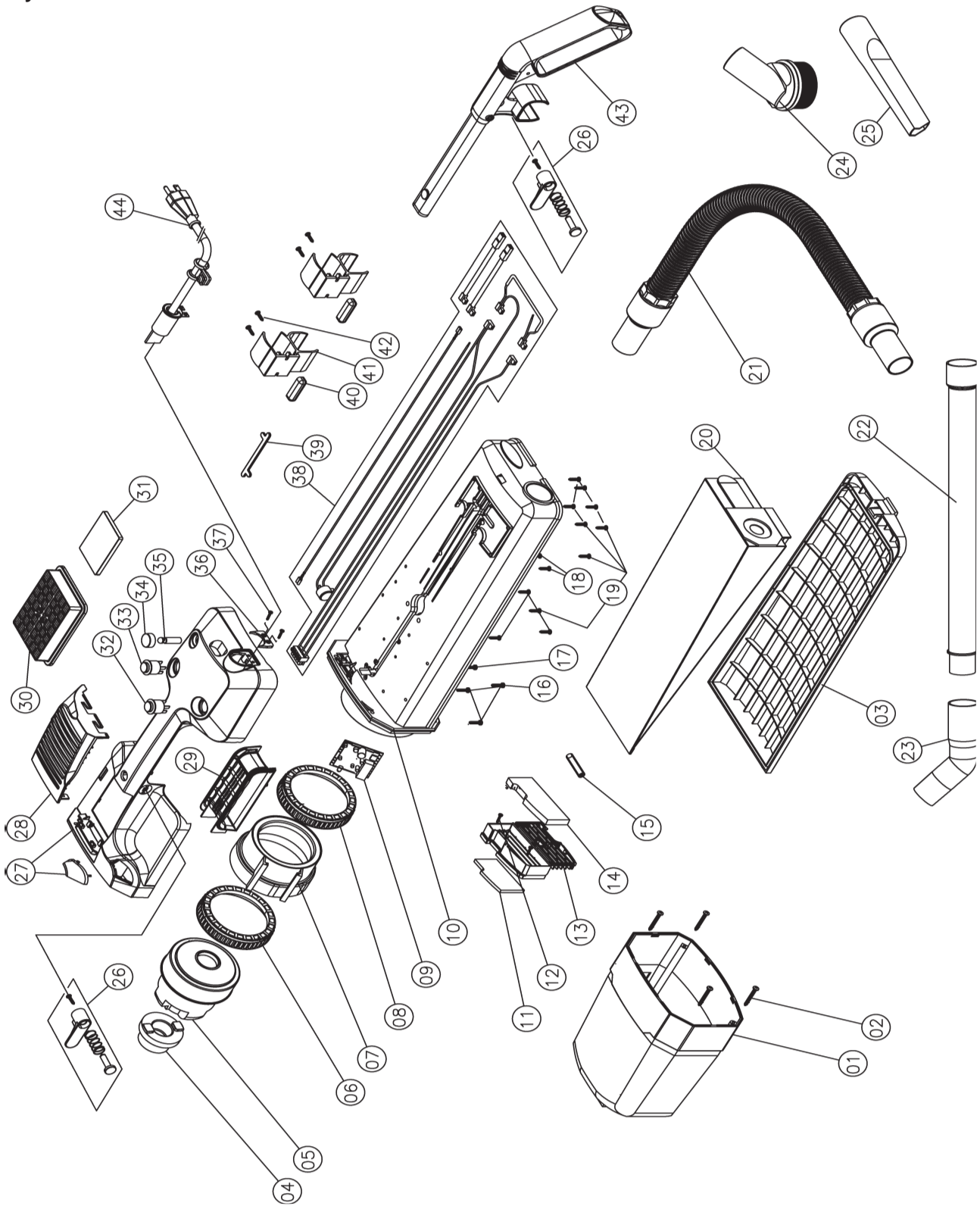
Model	V14 PRO PLUS	V17 PRO PLUS
Model No.	V14115PP	V17115PP
	14"	17"
Current Max	9.5 Amps	9.5 Amps
Vacuum motor power	1150 W	1150 W
Brush motor power	150 W	150 W
Working width	14" (350 mm)	17" (430 mm)
Weight	14.8 lbs	14.8 lbs
Noise level	68 dB(A)	68 dB(A)
Voltage	120 / 60 Hz	120 / 60 Hz
Brush motor control board	Provided	Provided
Transmission	Poly V belt	Poly V belt
Air flow	106 cfm (50 l/s)	106 cfm (50 l/s)
Dustbag	61 cu. In. (6.5 l)	61 cu. In. (6.5 l)
Cable	50 ft (15 m)	50 ft (15 m)
Protection	3-wire ground	3-wire ground
Suction	104" of water (26 kpa)	104" of water (26 kpa)



### For Safety When Servicing or Maintaining Machine

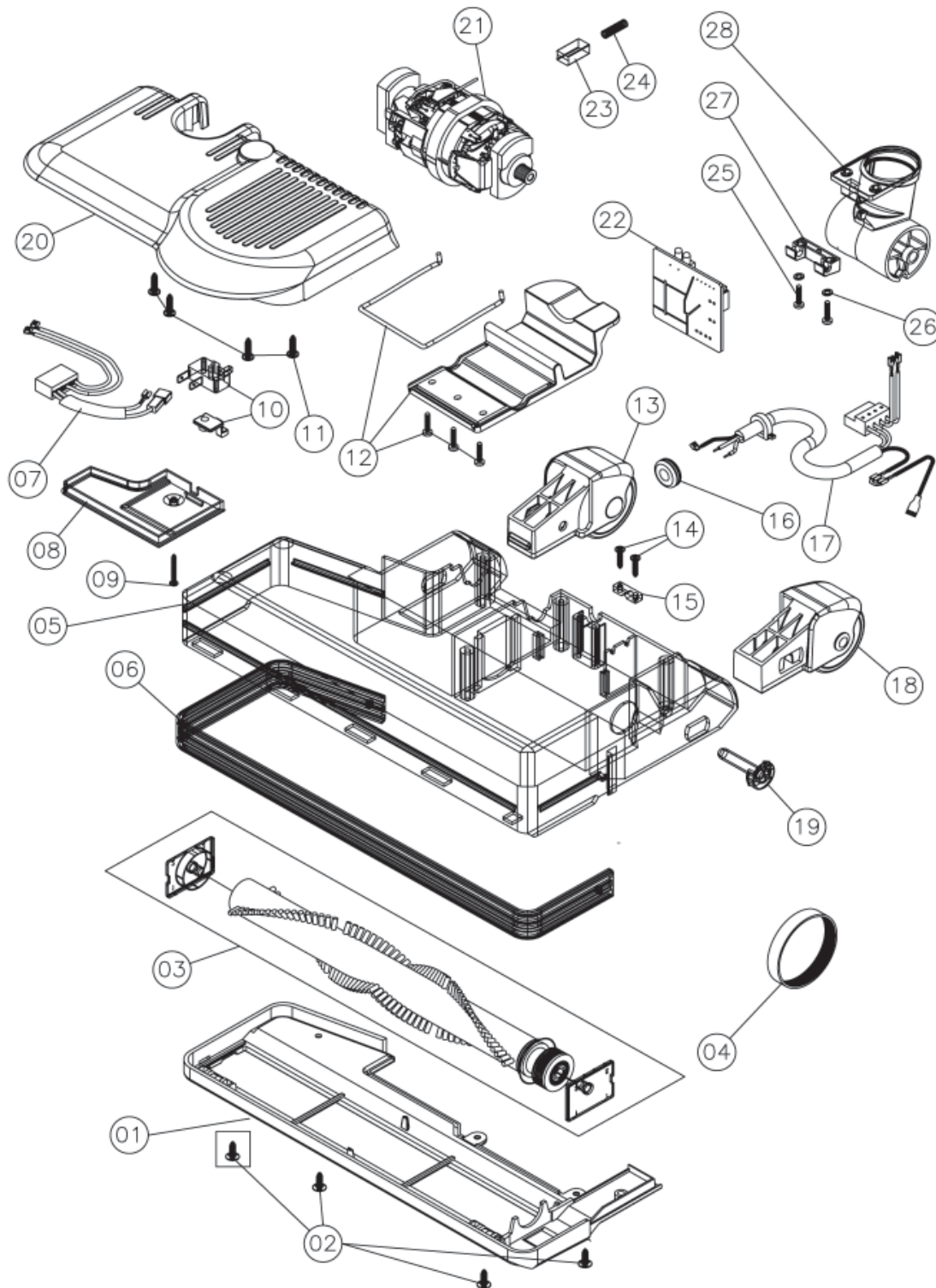
- Disconnect the power to the machine.
- Avoid moving parts. Do not wear loose jackets, shirts, or sleeves when working on machine.
- Do not clean machine with a pressure washer.
- Authorized personnel must perform repairs and maintenance. Use Minuteman supplied replacement parts.

Upper Housing  
Assembly



V14 PRO PLUS & V17 PRO PLUS UPPER HOUSING ASSEMBLY			
ITEM	PART NUMBER	QUANTITY	DESCRIPTION
1	141513	1	V14 FULL SHELL, CRX MINUTEMAN
1	141514	1	V17 FULL SHELL, CRX MINUTEMAN
2	141604	4	screw included in "Screw set for full shell"
3	141515	1	COMPLETE SHUTTER, CRX MINUTEMAN
4	141516	1	MOTOR SUPPORT
5	141517	1	1000-W, 120-V VACUUMING ENGINE
6	141518	1	PRIOR RING FOR VACUUMING MOTOR
7	141610	1	SPACER WCUP COMM.USA
8	141609	1	NEOPRENE VACUMING WIRING WCUP
9	141519	1	BRUSH MOTOR CONTROL BOARD
10	141520	1	MAROON CASING CRX
11	141612	1	ENGINE PROTECTION FILTER
12	141613	1	SCR-ST-PAN HD, 3.5MM X 16MM, STL., ZINC
13	141614	1	GREEN HOLDER INTERNAL FILTER
14	141615	1	INTERNAL FILTER
15	141616	1	PERFUME DISPENSER STICK, IN DRUM 10 PIECES
16	TBD	3	screw included in "Screw set for case"
17	TBD	1	screw included in "Screw set for case"
18	TBD	2	screw included in "Screw set for case"
19	TBD	11	screw included in "Screw set for case"
20	141602	1	PACK OF 10 PIECES PAPER BAGS
21	141622	1	GREY ROTATING SLEEVE FOR FLEXIBLE DUCT
22	141624	1	GREY TELESCOPING EXTENSION
23	141625	1	GREY CURVED SLEEVE FOR FLEXIBLE DUCT
24	141626	1	GREY SMALL BRUSH
25	141627	1	GREY TIP
26A	141521	1	UPPER CORD MAROON
27	141522	1	BURGUNDY COVER SWITCH/HOLDER CRX
28	141523	1	MAROON AIR VENT COVER, CRX
29	141524	1	MAROON HANDLE CRX
30	141525	1	HEPA H13-LAM FILTER, CRX CPL
31	141526	1	PRE-FILTER PPI60, "CRX"
32	141527	1	RED BIPOLAR SWITCH, CRX
33	141528	1	BLACK UNIPOLAR SWITCH, CRX
34	141529	1	LUMINOUS GEM SWITCH
35	141530	1	LUMINOUS DETECTOR
36	141531	1	MAROON CORD PROTECTOR
37	141532	2	screw included in "Screw set TO DEFINE"
38	141533	1	INNER ELETRIC CIRCUIT WIRING
39	141534	1	PLANKING
40	141643	2	BLOCK NUT
41	141644	2	DARK GREY HOSE FASTENER
42	141617	4	SCR-ST-PAN HD 3.5MM X 12MM STL ZINC
26	141651	1	DARK GREY UPPER CORD COILER SET
43	141535	1	COMPLETE HANDLE HANDGRIP CRX
44	141536	1	GREY POWER CORD,U.S. PLUG CPL MODIFIED

Lower Housing Assembly



V14 PRO PLUS & V17 PRO PLUS LOWER HOUSING ASSEMBLY			
ITEM	PART NUMBER	QUANTITY	DESCRIPTION
1	141662	1	BASE 14"
1	141500	1	BASE 16"
2	141664	4	SCR-ST-OD, 4.2MM X 16MM, STL., ZINC
3	141501	1	ROLLER 14"
3	141502	1	ROLLER 16"
4	141671	1	POLY-V BELT
5	141672	1	14" DARK GREY CASE
5	141503	1	16" DARK GREY CASE
6	141674	1	14" DARK GREY BUMPER 0,58
6	141504	1	16" DARK GREY BUMPER 0,71
7	141695	1	WIRING CARPET-BEATING
8	141681	1	LARGE MICROSWITCH COVER
9	141682	1	SCR-ST-PAN HD, 3MM X 20MM, STL., ZINC
10	141680	1	COMPLETE ASSEMBLED MICROSWITCH
11	141685	1	SCR-ST-PAN HD, 3.5MM X 16MM STL., ZINC
12	141505	1	LONG PEDAL
13	141506	1	LEFT BACK WHEEL CPL
14	141684	2	SCR-ST-PAN HD, 3.5MM X 16MM STL., ZINC
15	141686	1	U-BOLT FOR FASTENING THE CORD TO THE CASE
16	141676	1	CORD GROMMET
17	141677	1	FULL-SHEEL WIRING COMPLETE
18	141507	1	RIGHT BACK WHEEL CPL
19	141679	1	WHEEL HUB, DIAMETER 57
20	141508	1	DARK GREY LARGE JOINT-BLOCKING COVER
21	141509	1	120-V COMPLETE TRACTION ENGINE
22	141510	1	120-V COMPLETE ELECTRONIC BOARD
23	141511	1	BRUSH MOTOR CARBON
24	141512	1	BRUSH MOTOR CARBON SPRING
25	141691	2	SCR-ST-PAN HD, 3MM X 26MM STL., ZINC
26	141692	2	WASHER, 3.5MM STL., ZINC
27	141693	1	CORD FASTENER FOR JOINT
28	141694	1	JOINT COMMERCIAL

**WIRING DIAGRAMS**

